

JUNG Facility-Pilot visualization server, version 2.2

Content:

1 TECHNICAL REQUIREMENTS.....	2
1.1 HARDWARE.....	2
1.2 OPERATING SYSTEMS.....	2
1.3 SOFTWARE.....	2
1.4 CLIENT/BROWSER SETTINGS.....	2
2 FIRST RUN.....	3
2.1 LOGIN.....	3
2.2 PROJECT SETTINGS.....	4
2.3 USER MANAGEMENT.....	5
2.3.1 Connection Limit.....	5
2.3.2 Edit User Settings.....	5
2.3.3 Disconnect User.....	6
2.3.4 Add User.....	6
2.3.5 Change Administrator Password.....	7
2.4 OPEN PROJECT.....	8
2.5 USER-SPECIFIC START PAGE.....	8
2.6 INSTALLATION NOTE.....	10
2.7 EXIT STATION MANUALLY.....	11

Address

ALBRECHT JUNG GMBH & CO. KG

Volmestraße 1
D-58579 Schalksmühle
Federal Republic of Germany

Phone +49 (0) 23 55/80 60
Fax +49 (0) 23 55/80 61 89

 mail.info@jung.de

Copyright ©2014 Agentilo GmbH

All Rights reserved

Trademarks

Microsoft®, DirectX®, .NET Framework®, Windows®, Windows NT® are registered trademarks of Microsoft Corporation.

All trademarks and registered trademarks are the property of their respective owners.

1 Technical Requirements

1.1 Hardware

Processor	Pentium IV or equal, running at 2,0 GHz.
Main memory	1024 MB
Free disk space (additional disc space requirements depend on the configured archives)	40 GB
Screen resolution	1024 x 768 Pixel
Colors	Color depth min. 16 bit per pixel.

1.2 Operating Systems

WINDOWS 8 and 8.1 Pro, 32 + 64-bit	YES
WINDOWS 7 Professional, 32 + 64-bit	YES
WINDOWS XP	NO

1.3 Software

The installation of the Facility-Pilot 3.3 with its requirements, the installation of the Microsoft Information Server 7.5 (IIS) and the .NET Framework 3.5 Service Pack 1.

1.4 Client/Browser Settings

- Javascript must be enabled.
- Cookies must be enabled.
- Using multiple browser tabs is browser-dependent and will not work with most browsers.
- Whether an incognito / private browsing option works, is also browser-dependent.

2 First Run

When you start the visualization server in the browser for the first time, you see the login screen. The start page is available via <http://localhost:8080>, provided that the server was installed with the default settings.

2.1 Login

First, a login as an administrator is necessary to configure the visualization project, which is to be displayed. The account of the administrator only serves for the configuration of the project settings. To display a project, another user must be created.



Enter the following data:

Username: *admin*
Password: *0000*

Then confirm your entries with *Login*.

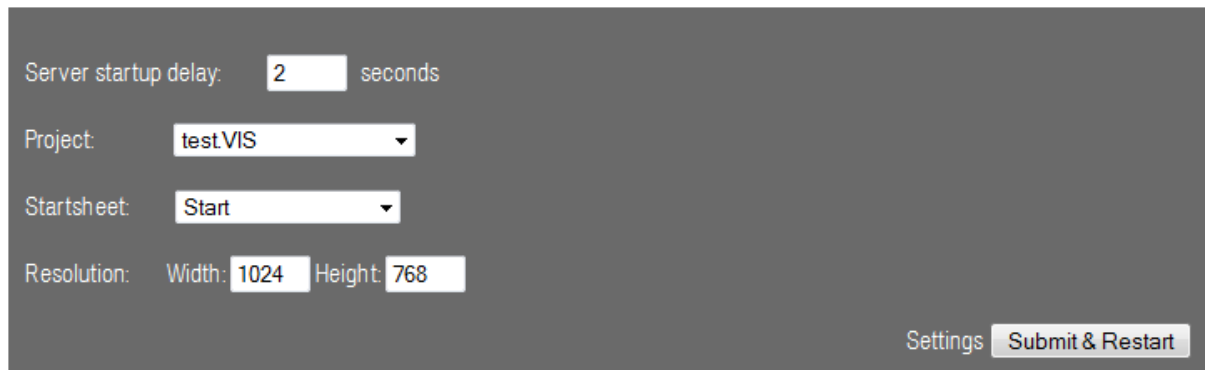
NOTE:

For your own safety the preset administrator password should be changed. The newly assigned password should be stored carefully!

The visualization server should not be made publicly available without further security measures on the Internet.

2.2 Project Settings

Under **Settings** in the administration area you have to select a visualization project, which should be accessible by the user.



The screenshot shows a settings form with the following fields and controls:

- Server startup delay: 2 seconds (with a text input for the value)
- Project: testVIS (with a dropdown arrow)
- Startsheet: Start (with a dropdown arrow)
- Resolution: Width: 1024 Height: 768 (with text inputs for width and height)
- Settings (text label)
- Submit & Restart (button)

Select the desired **visualization project** by clicking on the drop down menu for the project. Then you can define the **Start page**, which is automatically displayed when starting the project in the browser. Finally, define the start delay in seconds and the **resolution** and confirm by clicking the button **Apply and restart**.



The screenshot shows a confirmation dialog with the following elements:

- Submit (large heading)
- Accept changes and restart server? (text)
- OK (button)
- Cancel (button)

Then answer the confirmation prompt by clicking **OK**. The server will then be restarted after the configured start delay.

2.3 User Management

The users list from the control panel of the Facility Pilot system is listed in the administration area of the server. Here you can assign a start worksheet and the desired resolution to the different users. The default password for the users predefined by the system is [System](#).

2.3.1 Connection Limit

With the visualization server, maximal 10 participants/clients (hardware and operating system dependent) can connect simultaneously. If this connection limit is exceeded, the oldest connection is automatically disconnected.

Name	Startsheet	Width	Height	Permanent	Actions
Administrator				no	Edit
Main User				no	Edit
User	Start	1024	768	yes	Edit
Guest				no	Edit
SCIP	Start	1024	768	yes	Edit

With the Option [Permanent](#), users can be protected from the automatic separation.

2.3.2 Edit User Settings

To edit the user settings, click in the row of the desired user the button [Edit](#).

Edit User

Name: Guest

Startsheet:

Width:

Height:

Permanent Connection: ☒

[OK](#) [Cancel](#)

In the dialog [Edit user](#), confirm the selected options by clicking [OK](#).

Submit

Accept changes?

OK

Cancel

Then answer the confirmation prompt by clicking **OK**.

2.3.3 Disconnect User

The active users are displayed in the connection list.

User ID	Session	Actions
Guest	hgcmkb45bq00mhufzrlotv3h	<div>Disconnect</div>

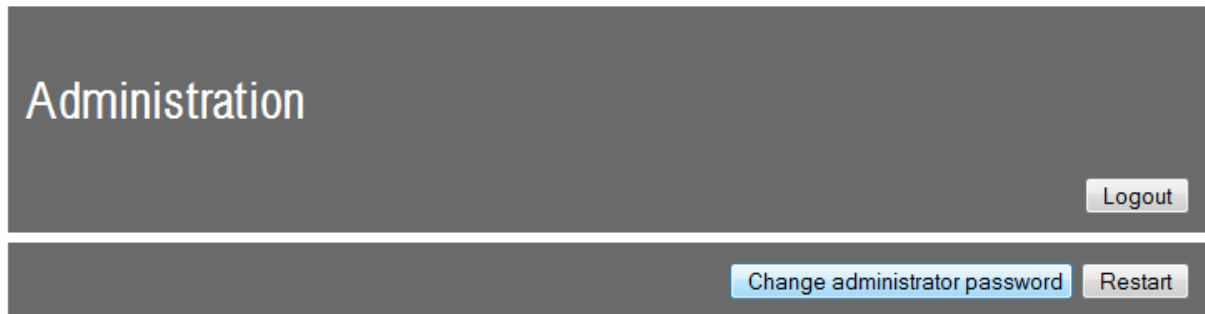
By clicking on the **Disconnect** button, the connection is released.

2.3.4 Add User

The administration of the users is done in the control panel of the JUNG Facility Pilot system. For further information, please refer to the chapter **4.1.1 User Management** in the help file of the JUNG Facility Pilot control panel.

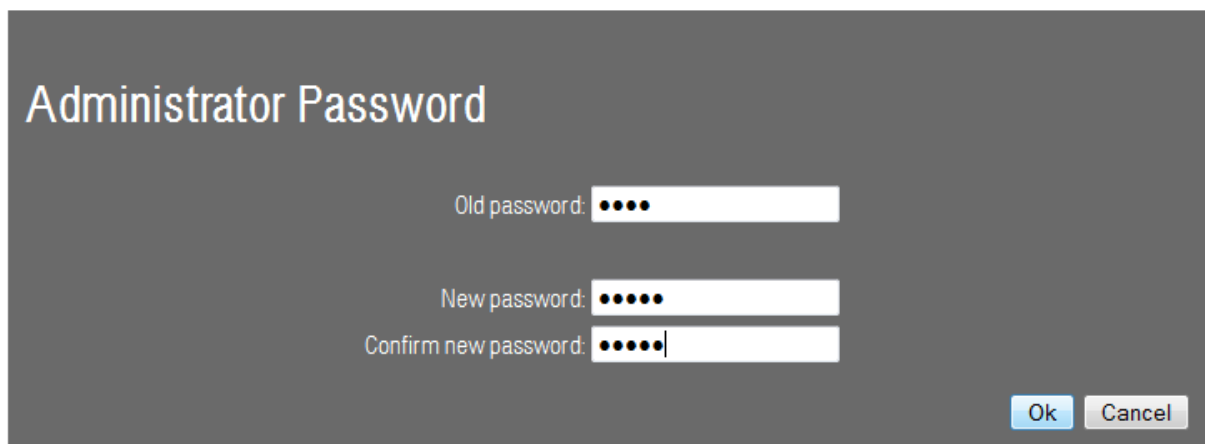
2.3.5 Change Administrator Password

To change the administrator password, click the button [Change administrator password](#).



A screenshot of the 'Administration' panel. The title 'Administration' is in the top left. In the top right is a 'Logout' button. In the bottom right are two buttons: 'Change administrator password' (highlighted with a blue border) and 'Restart'.

Enter the current and the new password. Then confirm the new password in the last entry field.



A screenshot of the 'Administrator Password' form. The title 'Administrator Password' is at the top left. Below it are three input fields: 'Old password:' with four dots, 'New password:' with five dots, and 'Confirm new password:' with five dots and a cursor. In the bottom right are 'Ok' and 'Cancel' buttons.

Confirm the entries by clicking [OK](#).



A screenshot of a 'Submit' confirmation dialog. The title 'Submit' is at the top left. Below it is the text 'Accept changes?'. In the bottom right are 'OK' and 'Cancel' buttons.

Answer the confirmation prompt by clicking [OK](#).

2.4 Open Project



Enter the user data in the login mask:

Username: *Guest*
Password: *System*

Then confirm your entries by clicking *Login* and the start page of the project specified before will be opened.

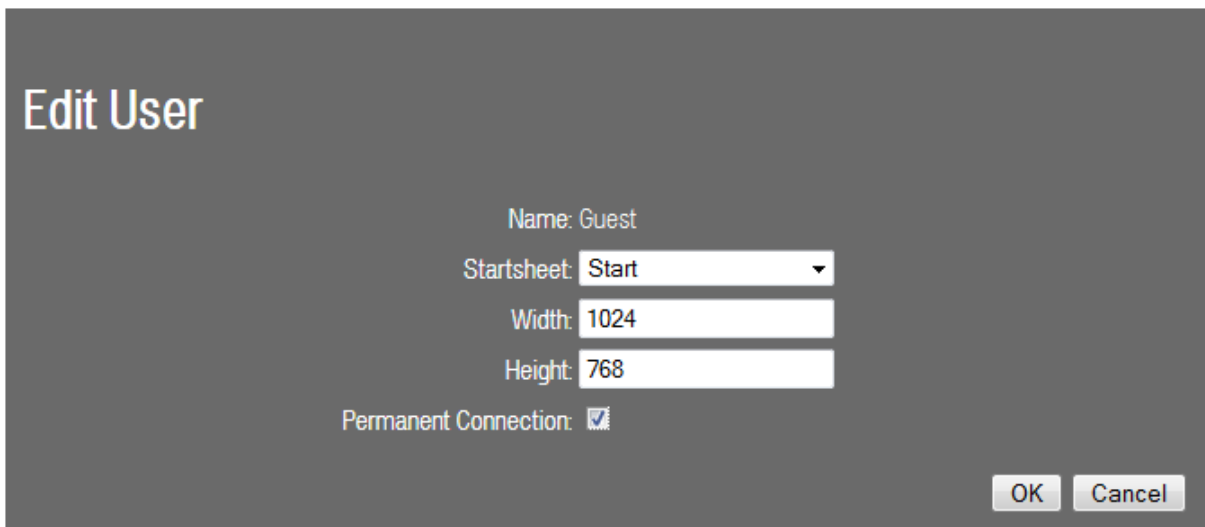
2.5 User-specific Start Page

You can assign specific start pages to individual users, that deviate from the default start page.

Enter in the address bar of the browser <http://localhost:8080> and press the *Enter* button, then log back in with the user *admin* and the password *0000*.

Name	Startsheet	Width	Height	Permanent	Actions
Administrator				no	Edit
Main User				no	Edit
User	Start	1024	768	yes	Edit
Guest				no	Edit
SCIP	Start	1024	768	yes	Edit

Under *User*, click in the row of the desired user on the button *Edit*.

A dark gray dialog box titled "Edit User" in white text. It contains several input fields: "Name: Guest" (text), "Startsheet: Start" (dropdown menu with a downward arrow), "Width: 1024" (text), "Height: 768" (text), and "Permanent Connection: ☒". At the bottom right, there are two buttons: "OK" and "Cancel".

Edit User

Name: Guest

Startsheet: Start

Width: 1024

Height: 768

Permanent Connection: ☒

OK Cancel

Select the required worksheet in the drop-down menu, configure, if applicable, the resolution and confirm by clicking **OK**.

A dark gray dialog box titled "Submit" in white text. It contains a single line of text: "Accept changes?". At the bottom right, there are two buttons: "OK" and "Cancel".

Submit

Accept changes?

OK Cancel

Answer the confirmation prompt by clicking **OK**. The settings will then be saved and assigned to the user.

Then click **Logout** to logout from the administration area.

A dark gray rectangular panel titled "Administration" in white text. In the bottom right corner, there is a button labeled "Logout".

Administration

Logout

After entering the user data on the login page, the assigned start page for the user is automatically displayed.

2.6 Installation Note

If you first uninstall and later reinstall the Facility-Pilot visualization, you must uninstall and reinstall the visualization server (after the reinstallation of the Facility-Pilot) as well.

For the installation and uninstallation of the visualization server run the setup. Follow the installation instructions. Please note that the Microsoft Information Server 7.5 (IIS) must be stopped before this process.

If not all the required components of IIS are installed or enabled, an error message may possibly be generated. For example:

Error Summary

HTTP Error 500.19 - Internal Server Error
The requested page cannot be accessed because the related configuration data for the page is invalid.

Detailed Error Information

Module	IIS Web Core	Requested URL	[REDACTED]
Notification	BeginRequest	Physical Path	[REDACTED]
Handler	Not yet determined	Logon Method	Not yet determined
Error Code	0x80070021	Logon User	Not yet determined

Config Error: This configuration section cannot be used at this path. This happens when the section is locked at a parent level. Locking is either by default (overrideModeDefault="Deny"), or set explicitly by a location tag with overrideMode="Deny" or the legacy allowOverride="false".

Config File: \\? [REDACTED]

Config Source

```
216:      <validation validateIntegratedModeConfiguration="false"/>
217:      <handlers>
218:          <add name="ScriptHandlerFactory"
```

Links and More Information

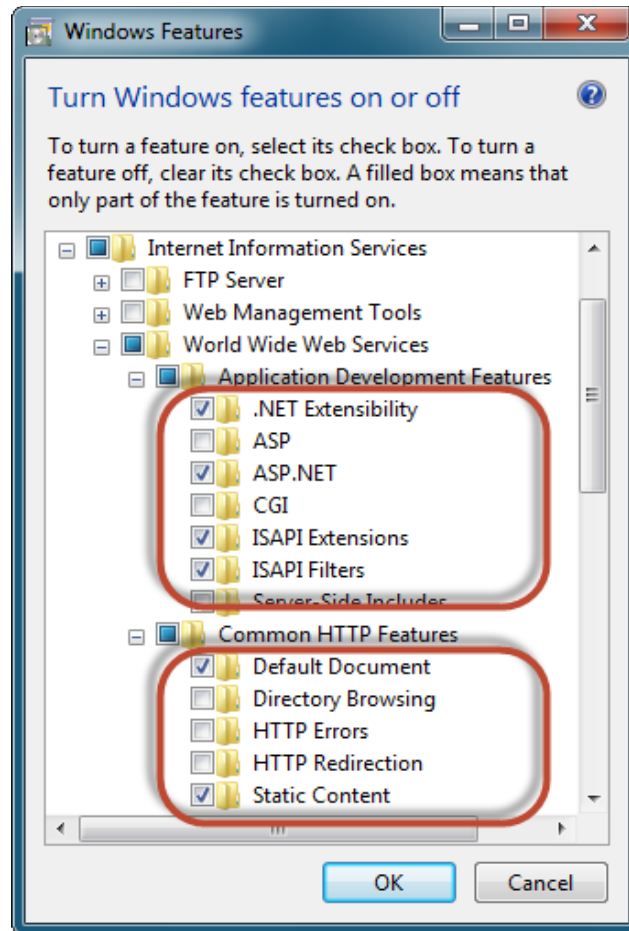
This error occurs when there is a problem reading the configuration file for the Web server or Web application. In some cases, the event logs may contain more information about what caused this error.

[View more information »](#)

In this case, you have the option to install the required ASP.NET components.

Select Components and Functions

Select Control panel > Programs and features > turn Windows features on or off.



Activate and confirm the required options under Internet information services > world wide web services > Application development features > **ASP.NET** and Common HTTP Features > **Static Content**. Then the activated check boxes should look like in the picture above.

2.7 Exit Station manually

The visualization server interacts with the Facility-Pilot System via a component, which is named **Station**. It is the common link between the Facility Pilot modules. If the station is not already running, it is activated and started in the information area when the server is started by opening the user interface in the browser. The station continues running until the application pool is stopped explicitly in the Microsoft Information Server 7.5 (IIS).